

**Copyright Reserved**  
 This Contractor shall verify and be responsible for all dimensions, DO NOT SCALE DRAWINGS. Stantec will not be held responsible for any errors or omissions that are reported to Stantec without delay. Stantec will not be held responsible for any errors or omissions that are reported to Stantec after the date of completion of the drawings. The Contractor shall be responsible for the accuracy of the information provided to Stantec. Stantec is not responsible for any errors or omissions that are reported to Stantec after the date of completion of the drawings. Stantec is not responsible for any errors or omissions that are reported to Stantec after the date of completion of the drawings.

Consultants

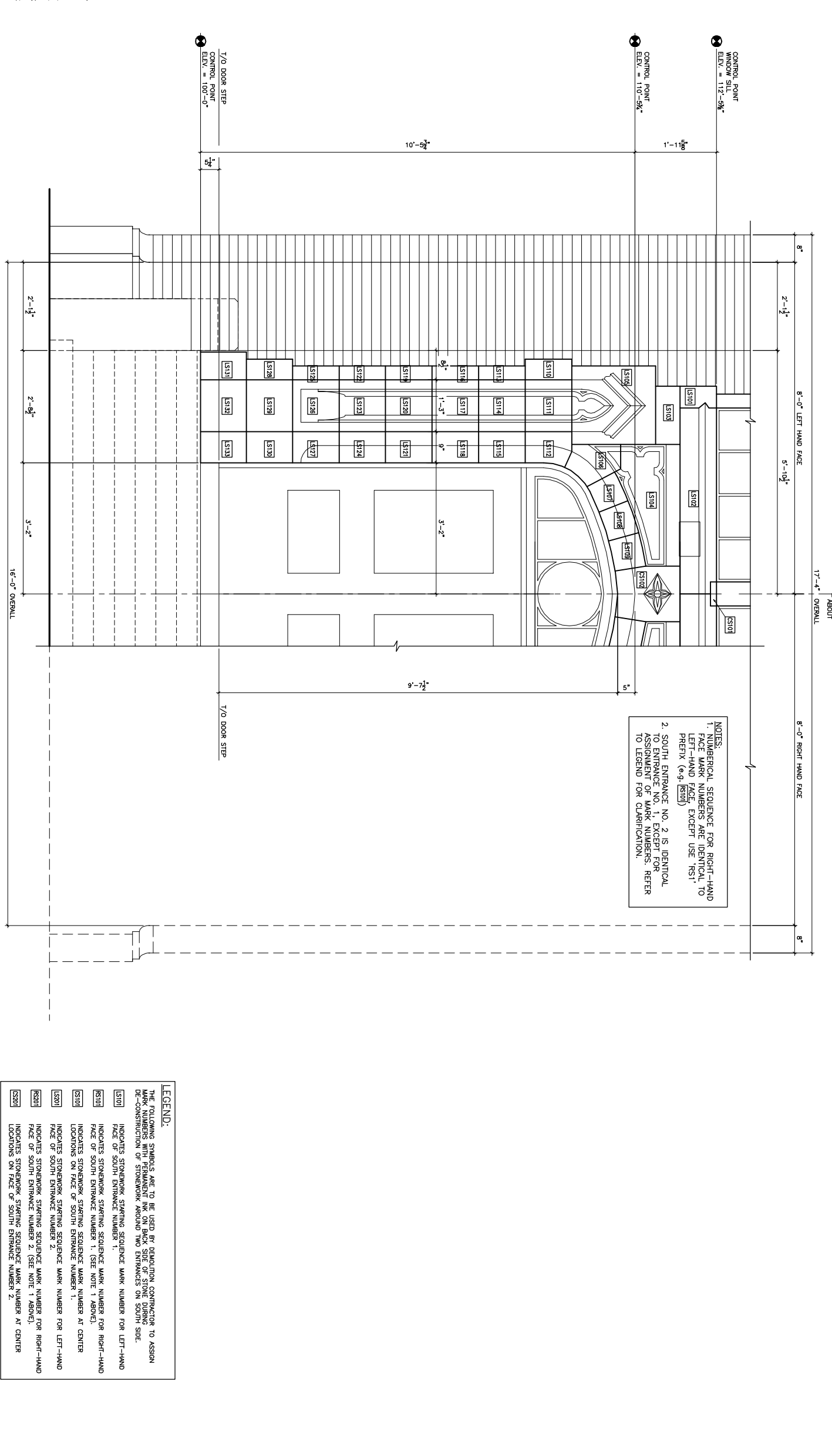
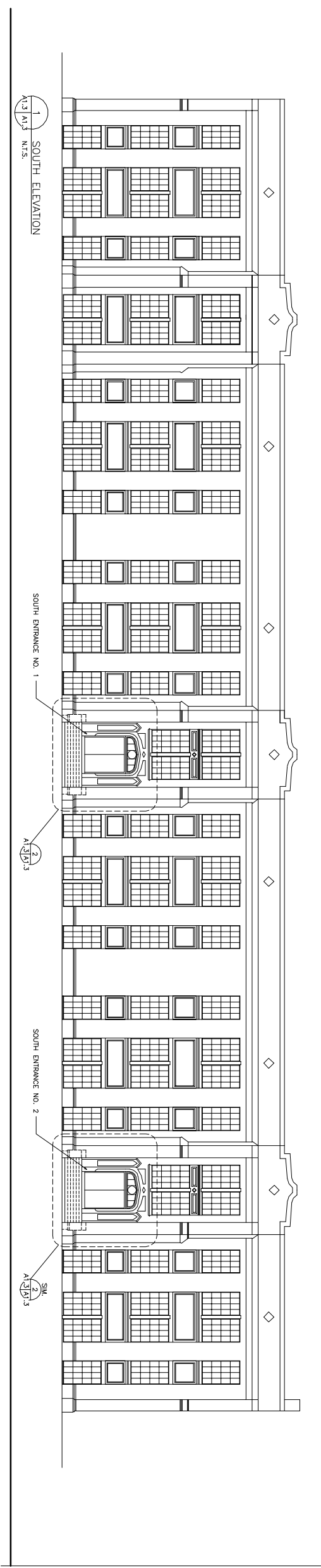
Legend

Notes

Project No.	144442228
Sheet	A1.3
Scale	AS SHOWN
Revision	0
Drawn By	VM/KAD
Checked By	VM/KAD
Approved By	VM/KAD
Date	2024.04.21
Project Name	GATHERCOLE BUILDING MEASURED DRAWINGS
File Name	2024.04.21
Rev	01
Rev Description	AS SHOWN
Rev Date	2024.04.21
Rev By	VM/KAD
Rev Appr	VM/KAD
Rev Date	2024.04.21
Rev Description	AS SHOWN
Rev Date	2024.04.21
Rev By	VM/KAD
Rev Appr	VM/KAD
Rev Date	2024.04.21
Rev Description	AS SHOWN

**Client/Project**  
 CITY OF SASKATOON  
**Client/Project**  
 GATHERCOLE BUILDING  
 MEASURED DRAWINGS  
 Saskatoon SK Canada

**Title**  
 SOUTH ENTRANCE DETAILS



**NOTES:**  
 1. NUMERICAL SEQUENCE FOR RIGHT-HAND FACE MARK NUMBERS ARE IDENTICAL TO LEFT-HAND FACE, EXCEPT USE 'RST' PREFIX (e.g. R5010)  
 2. SOUTH ENTRANCE NO. 2 IS IDENTICAL TO ENTRANCE NO. 1 EXCEPT FOR ASSIGNMENT OF MARK NUMBERS. REFER TO LEGEND FOR CLARIFICATION.

**LEGEND:**  
 THE FOLLOWING SYMBOLS ARE TO BE USED BY STRUCTURAL CONTRACTOR TO ASSIGN MARK NUMBERS WITH PERMANENT INK ON BACK SIDE OF STONE DURING DE-CONSTRUCTION OF STONEMWORK AROUND TWO ENTRANCES ON SOUTH SIDE.  
 [L510] INDICATES STONEMWORK STARTING SEQUENCE MARK NUMBER FOR LEFT-HAND FACE OF SOUTH ENTRANCE NUMBER 1.  
 [R510] INDICATES STONEMWORK STARTING SEQUENCE MARK NUMBER FOR RIGHT-HAND FACE OF SOUTH ENTRANCE NUMBER 1. (SEE NOTE 1 ABOVE).  
 [L520] INDICATES STONEMWORK STARTING SEQUENCE MARK NUMBER AT CENTER LOCATIONS ON FACE OF SOUTH ENTRANCE NUMBER 1.  
 [L530] INDICATES STONEMWORK STARTING SEQUENCE MARK NUMBER FOR LEFT-HAND FACE OF SOUTH ENTRANCE NUMBER 2.  
 [R530] INDICATES STONEMWORK STARTING SEQUENCE MARK NUMBER FOR RIGHT-HAND FACE OF SOUTH ENTRANCE NUMBER 2. (SEE NOTE 1 ABOVE).  
 [L540] INDICATES STONEMWORK STARTING SEQUENCE MARK NUMBER AT CENTER LOCATIONS ON FACE OF SOUTH ENTRANCE NUMBER 2.