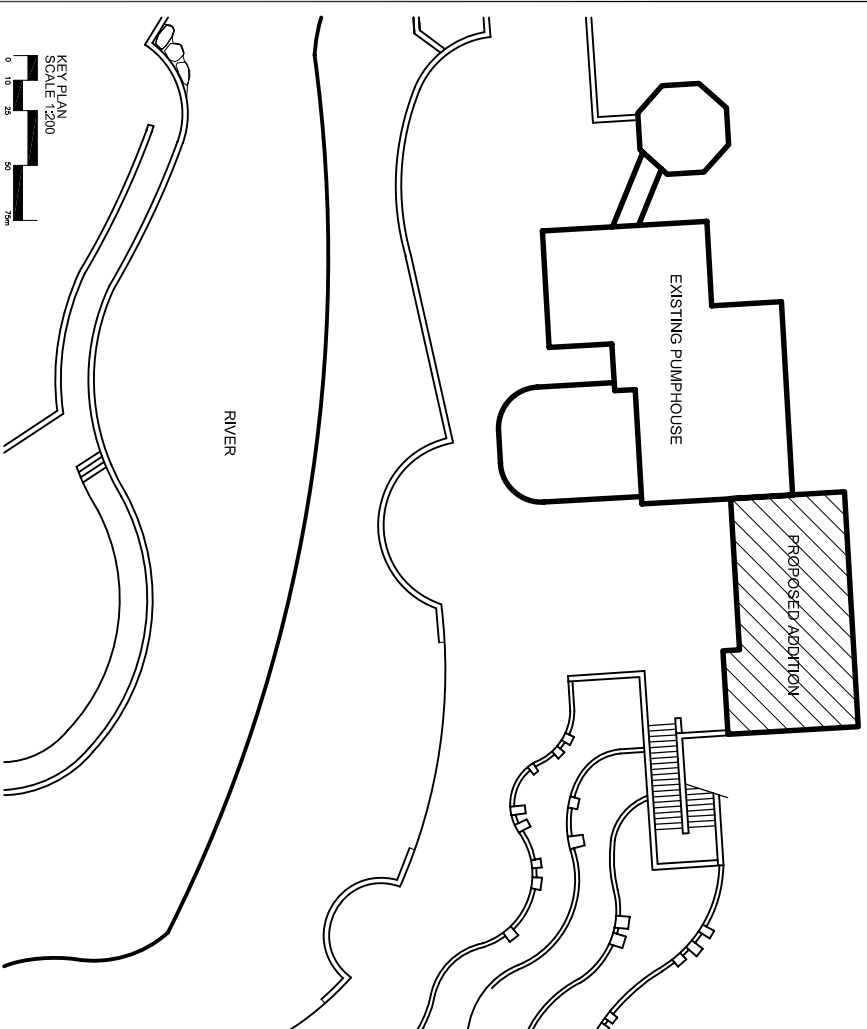
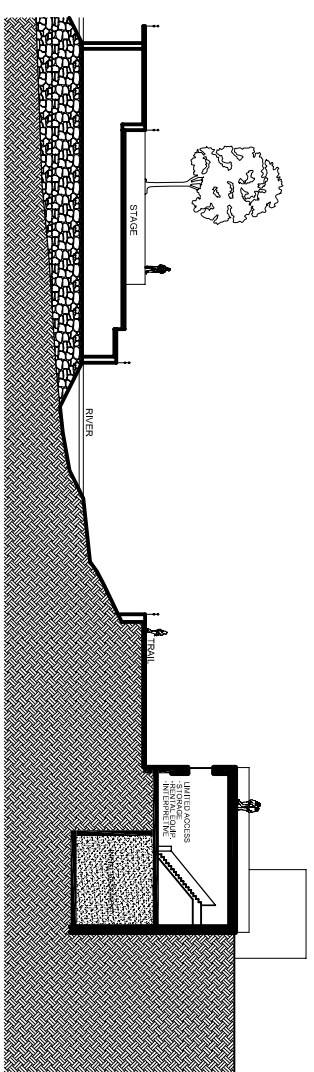


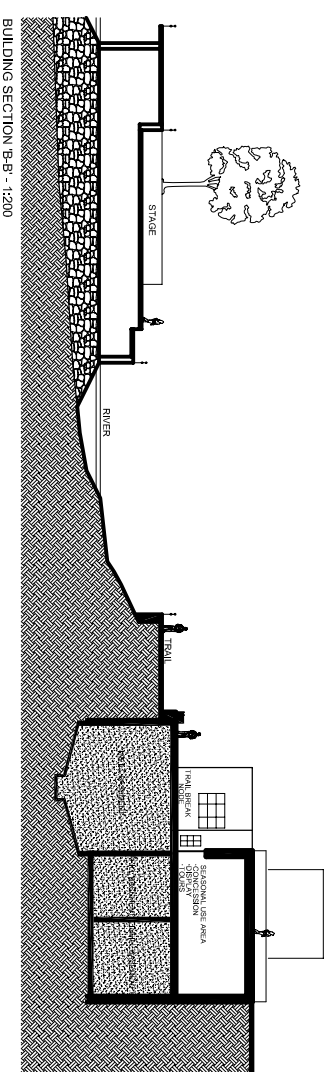
CONCEPTUAL PERSPECTIVE  
NTS



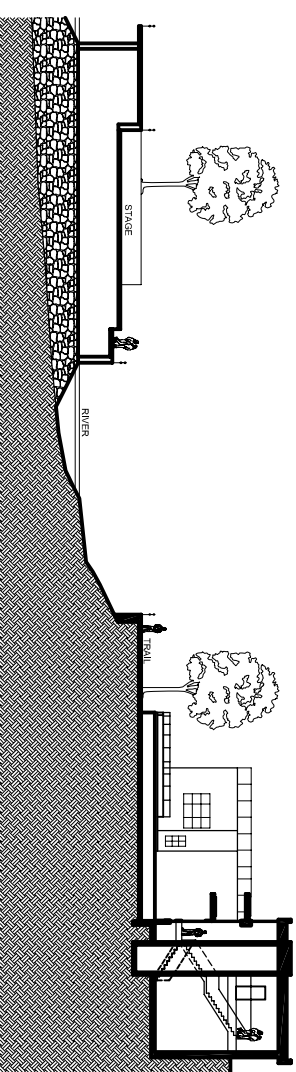
KEY PLAN  
SCALE 1:200



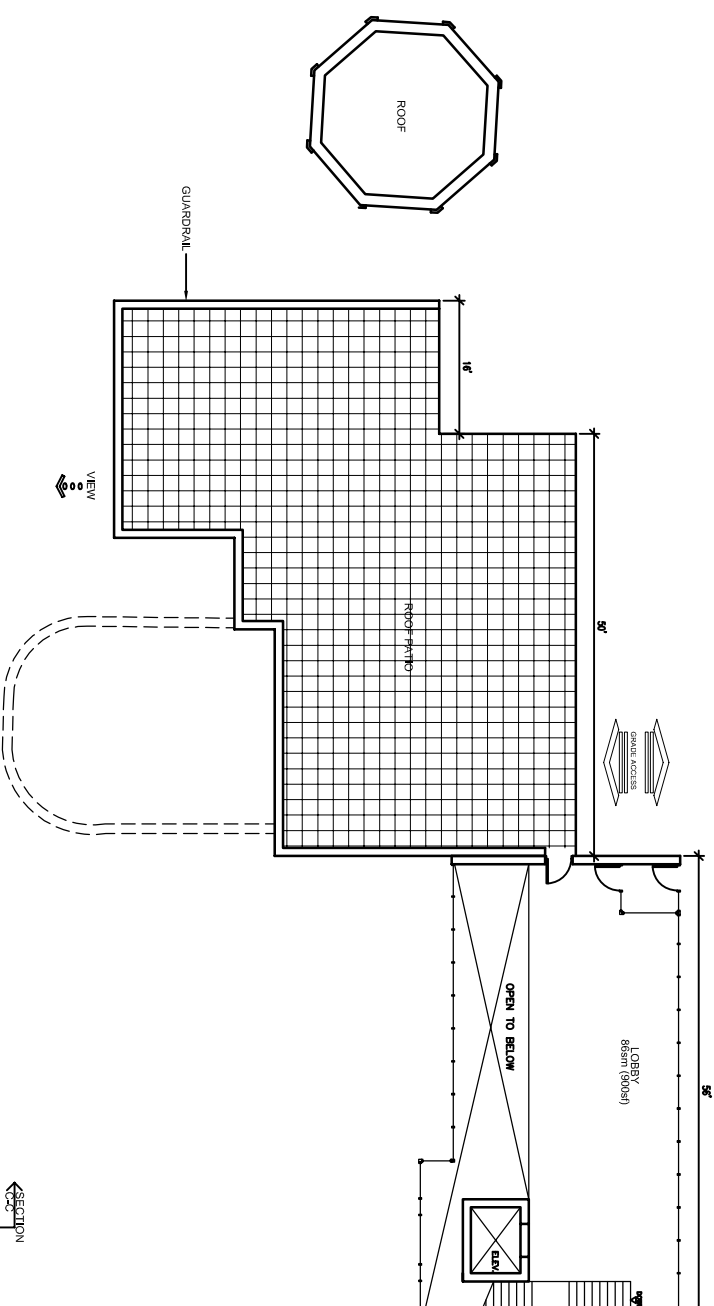
BUILDING SECTION Y-A-A - 1:200



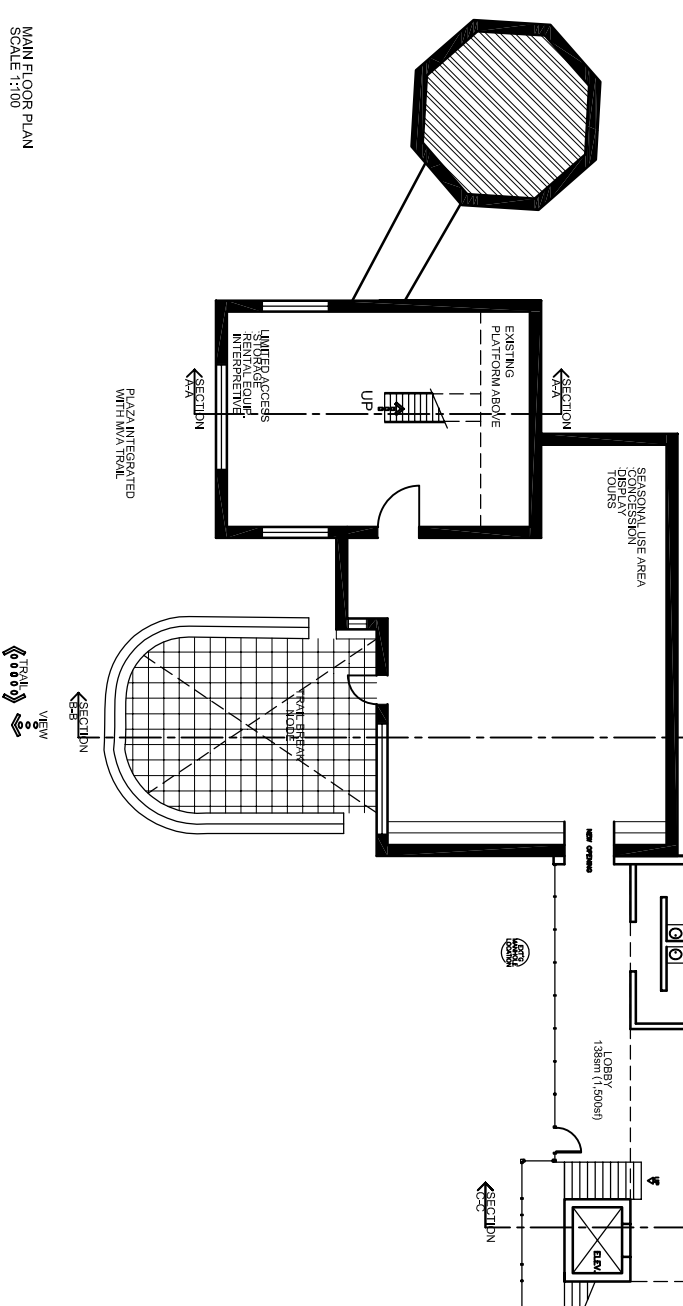
BUILDING SECTION B-B - 1:200



BUILDING SECTION C-C - 1:200



ROOF SECOND FLOOR ADDITION PLAN  
SCALE 1:100



MAIN FLOOR PLAN  
SCALE 1:100

PROJECT PROVIDERS

**Canada**  
Government of Saskatchewan  
**City of Saskatoon**

PROJECT CONSULTANTS  
**CROSBY HANNA & ASSOCIATES**  
LANDSCAPE ARCHITECTURE AND PLANNING

**KINDRACHUK**  
AGREY  
ARCHITECTS

IN ASSOCIATION WITH:

- CamNorth Aquatic Ecologists
- Cattell & Wright Municipal Engineers
- Cochrane Engineering Electrical Engineers
- George Nickerson Franko & Associates Ltd. Legal Land Surveyors
- Johnson & Wenzel Resource Management Consultants
- Jim Yelke Hydrochemical Engineer
- Kindrachuk Agrey Architecture Architects
- P. Kashiwada Engineering Ltd. Geotechnical Engineers
- Ruba Kazanova Engineering Ltd. Ruba Structural Engineers

**River**  
**LANDING**

Phase 2 Riverfront  
PROJECT NO. C05 1787 / C14 08021

SHEET NAME: PUMPHOUSE REDEVELOPMENT  
DATE: 2006/01/24  
SHEET: 19