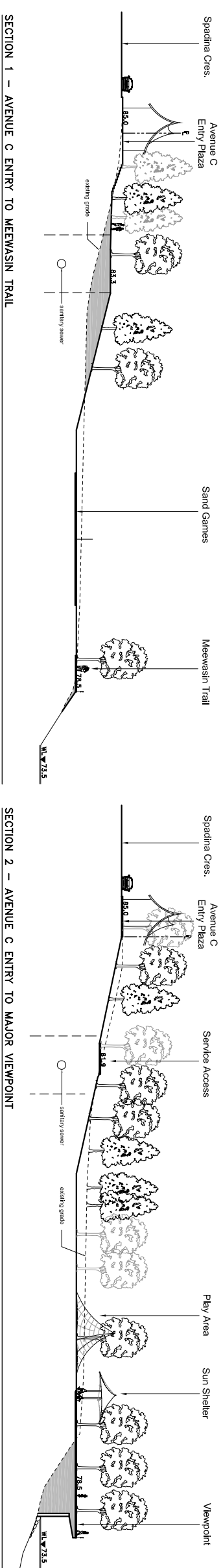


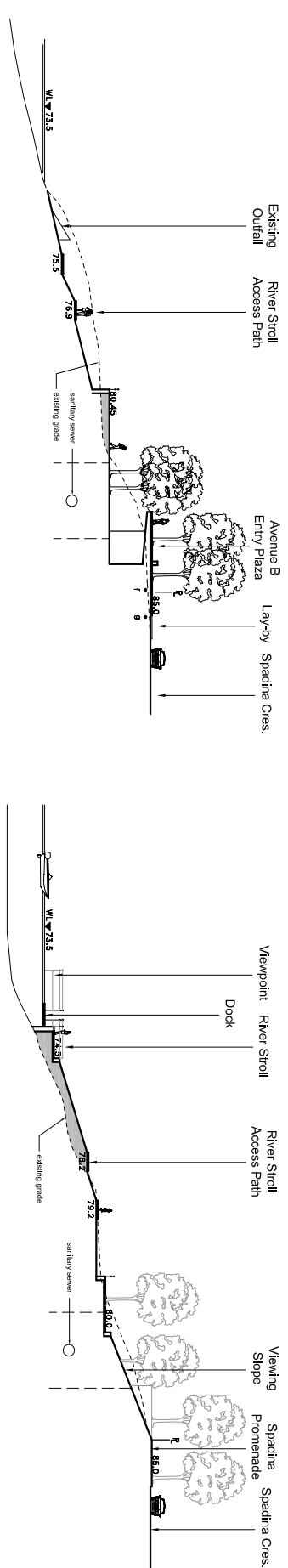
IN ASSOCIATION WITH:

- CanNorth
Aquatic Ecologists
- Chiffell & Wright
Municipal Engineers
- Coopers Engineering
Electrical Engineers
- George McDonald Frano & Associates Ltd.
Lighting Design Services
- Johnson & Wenzel
Resource Management Consultants
- Jim Kells
Hydroponical Engineer
- Kinderhook Agri/Architecture
Architects
- P. Madhavan Engineering Ltd.
Geotechnical Engineers
- Robt Kalam Engineering Ltd.
Structural Engineers



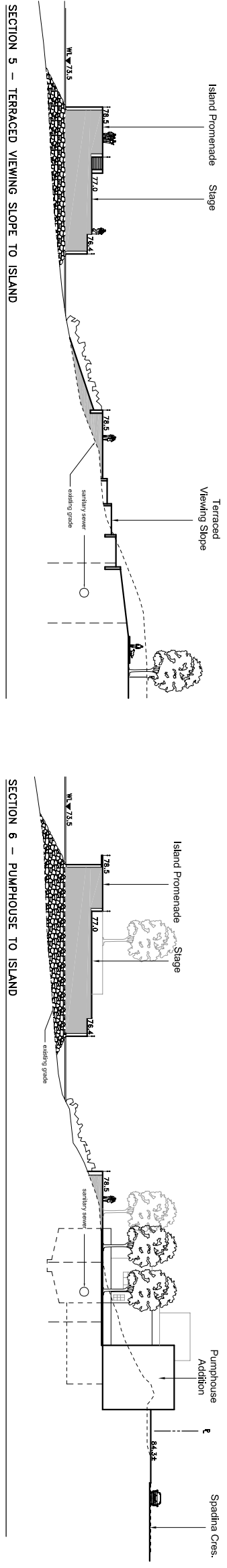
SECTION 1 – AVENUE C ENTRY TO MEEWASIN TRAIL

SECTION 2 – AVENUE C ENTRY TO MAJOR VIEWPOINT



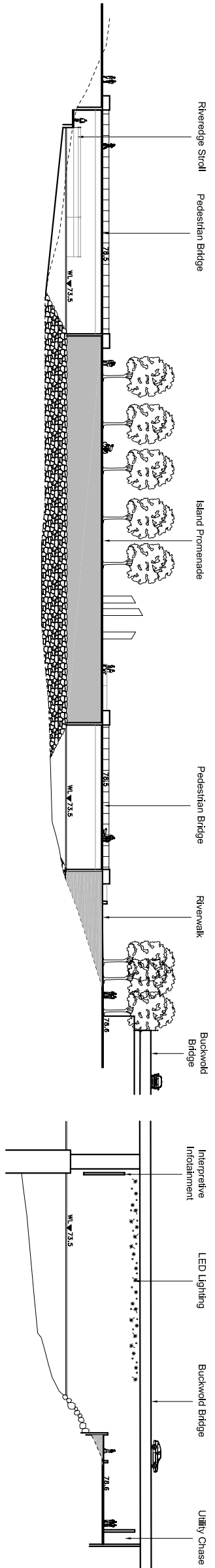
SECTION 3 – AVENUE B ENTRY TO RIVER

SECTION 4 – SPADINA PROMENADE TO RIVER STROLL



SECTION 5 – TERRACED VIEWING SLOPE TO ISLAND

SECTION 6 – PUMPHOUSE TO ISLAND



SECTION 7 – PEDESTRIAN BRIDGES & ISLAND PROMENADE

SECTION 8 – BUCKWOLD BRIDGE UNDERPASS

Phase 2 Riverfront
 PROJECT NO. C05 1787 / CHA 05021
 1:250
 SHEET SCALE
 DATE 2006/01/24
 SHEET 18